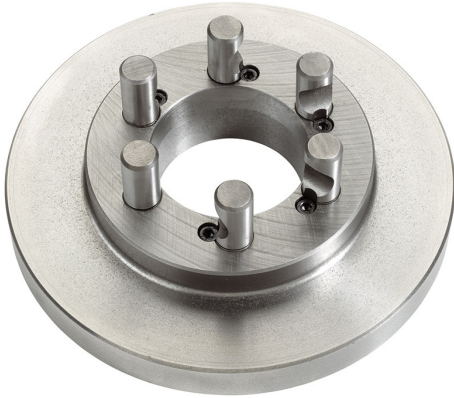


CAMLOCK DIN 55029 TO SHORT CONE WITH RAW SPINDLE SIDE.



<b>Cam lock Type</b>	11"
<b>Size</b>	Ø 400 mm
<b>Thickness</b>	30 mm
<b>Pins</b>	Ø 30 mm
<b>Gross weight</b>	29,00 kg
<b>EAN Code</b>	8012667312787



Box



Cast Iron



Wooden Box