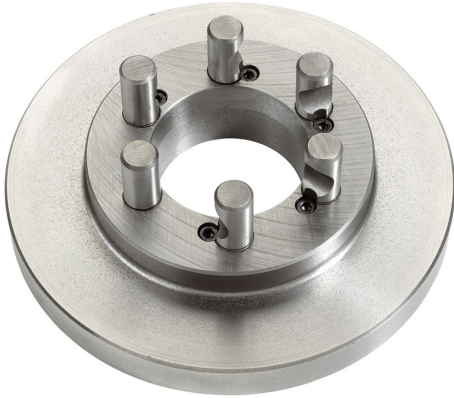


CAMLOCK DIN 55029 TO SHORT CONE WITH RAW SPINDLE SIDE.



Cam lock Type	11"
Size	Ø 320 mm
Thickness	45 mm
Pins	Ø 30 mm
Gross weight	18,25 kg
EAN Code	8012667312770



Box



Cast Iron



Wooden Box