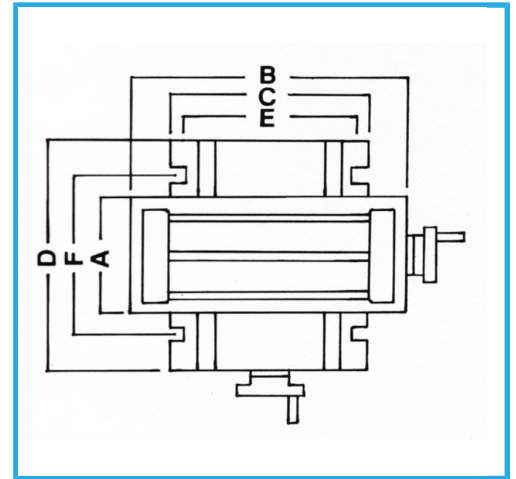
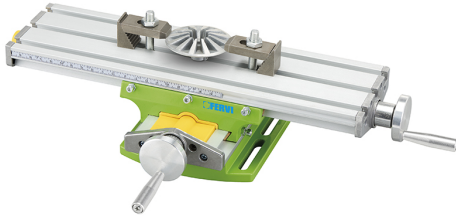


WITH FIXED MILLIMETER SCALE FOR LONGITUDINAL TABLE MOVEMENTS.



<b>A</b>	95 mm
<b>B</b>	330 mm
<b>C</b>	125 mm
<b>D</b>	145 mm
<b>Height</b>	82 mm
<b>Slot</b>	8 mm
<b>Slot distance</b>	36 mm
<b>Travels</b>	190 x 65 mm
<b>Signs</b>	0,05 mm
<b>Overall dimensions</b>	395 x 210 mm
<b>Net weight</b>	2,5 kg
<b>Packaging dimensions</b>	400x240x120 h mm
<b>Gross weight</b>	2,63 kg
<b>EAN Code</b>	8012667361105



Aluminum



Box