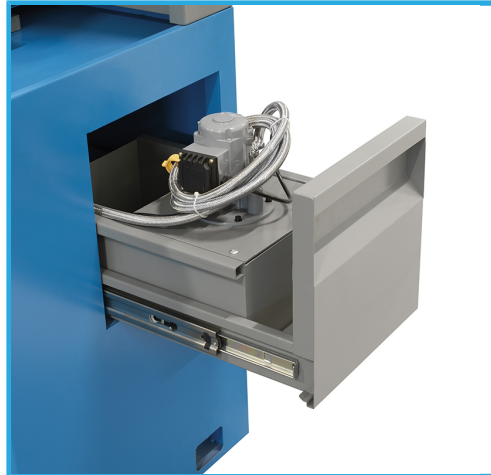
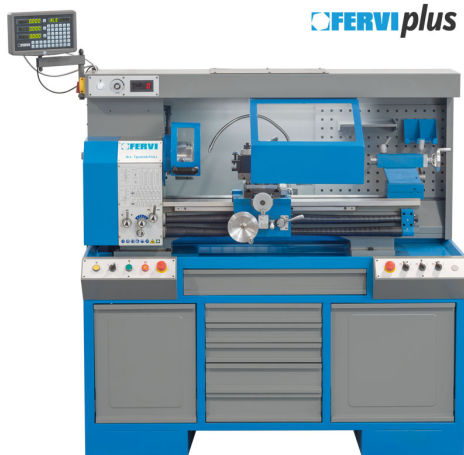


**BENCH LATHE SEMI NORTON GEAR BOX AND BELT DRIVE,
 LONGITUDINAL AND CROSS FEEDS, TURNING, LEADSCREW, BENCH
 WITH DRAWERS, CABINET...**



Centers height	160 mm
Max swing over the bed	320 mm
Max swing over the cross slide	210 mm
Tool height	20 mm
Distance between centers	830 mm
Spindle bore	38 mm
Spindle nose Camlock	Camlock D1-4
Spindle bore taper MT	5
Variable spindle speed	60 - 1600 rpm
Longitudinal feeds	0,085 - 0,832 mm / giro
Cross feeds	0,01 - 0,10 mm/giro
Metric threads	(18) 0,2 - 3,5 mm
Inch threads	(21) 8 - 48 TPI
Tailstock taper MT	3
Motor	230 V 50/60 Hz 1,5 kW
Dimensions	1550 x 660 x 1790 mm
Net weight	500 kg
Gross weight	550,00 kg
EAN Code	8012667395490

Included

- 3+3 jaw self centering chuck Ø 160 mm
- 4 Reversible independent jaws chuck Ø 160 mm
- Face plate Ø 240 mm
- Flange for 4-jaw chuck Ø 160 mm
- Follow rest
- Steady rest
- Dead center MT 3
- Dead center MT 5
- Live center MT 3
- Keyless chuck with MT 3 connection
- Clutch on turning bar
- Selector negative electro-brake
- Leadscrew hood
- Slidable turret safeguard
- Chuck safeguard with micro switch
- Full length splash guard
- Quick change tool post T0AE
- LED light
- Quick locking tailstock carriage
- Refrigeration system with pump in sliding drawer
- Drawers with sponge and accessories included
- Set 7 Pcs tools 20 mm with turning inserts