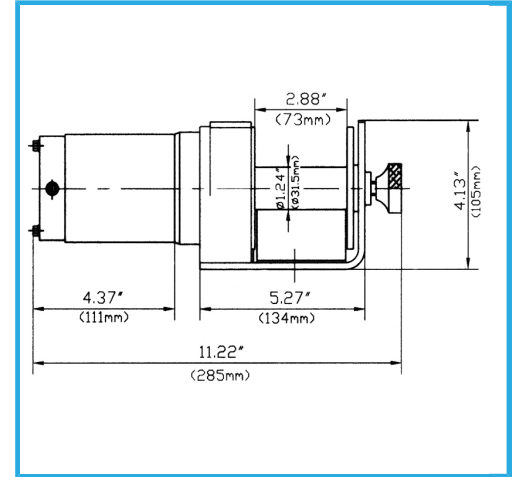


PERMANENT MAGNET MOTOR, METAL FRAME, HOOK WITH PULLEY FOR DOUBLE PULL, RESISTANT CABLE, WITH ANTI UNWINDING DEVICE AND CABLE...



Rated line pull	450 / 900 kg
Speed	1,3 - 3,2 m / min
Motor	12 V 0,7 kW 0,9 hp
Gear reduction ratio	153:1
Cable size	ø 4 mm x 15 m
Drum dimensions	ø 31,5 x 73 mm
Overall dimensions	285 x 105 x 105h mm
Net weight	6.7 kg
Gross weight	8,60 kg
EAN Code	8012667206529



Included

Mounting plate
Fairlead
Traction hook
Portable control
command with cable
bolts and safety
washers for
connections