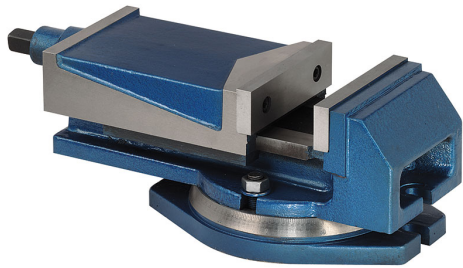


WITH INTERCHANGEABLE JAWS IN HARDENED AND GROUND STEEL.
SLIDING PARTS GROUND. FULLY COVERED SCREW. WITH CRANK.



Jaws	160 x 50 mm
Opening	125 mm g
Overall sizes	422 x 235 x 162h mm
Base dimensions	300 x 235 mm
Slot distance	275 mm
Slot	18 mm
Net weight	30 kg
Gross weight	32,80 kg
EAN Code	8012667003043



Box



Cast Iron