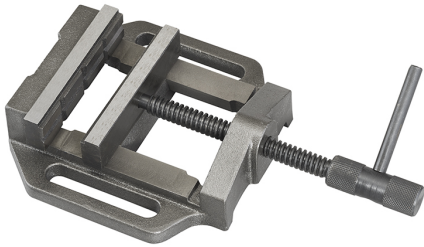


EQUIPPED WITH A PRISMATIC JAW AND A SMOOTH JAW.



| | |
|------------------------|---------------|
| Jaws | 125 x 30 mm |
| Opening | 100 mm g |
| Base dimensions | 182 x 182 mm |
| Net weight | 4 kg |
| Gross weight | 4,47 kg |
| EAN Code | 8012667002145 |



Box



Cast Iron