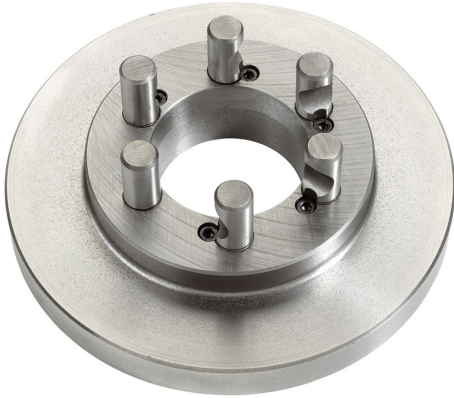


CAMLOCK DIN 55029 TO SHORT CONE WITH RAW SPINDLE SIDE.



Cam lock Type	5"
Size	Ø 250 mm
Thickness	30 mm
Pins	Ø 19 mm
Gross weight	9,50 kg
EAN Code	8012667238902



Box



Cast Iron



Wooden Box