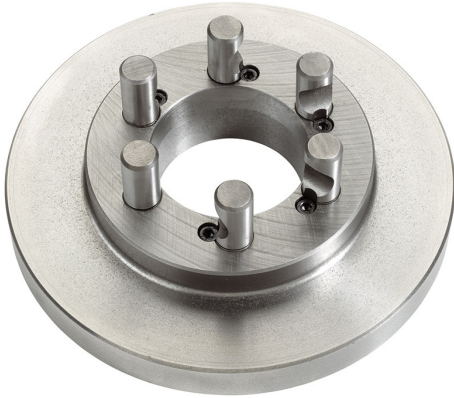


CAMLOCK DIN 55029 TO SHORT CONE WITH RAW SPINDLE SIDE.



<b>Cam lock Type</b>	11"
<b>Size</b>	Ø 500 mm
<b>Thickness</b>	36 mm
<b>Pins</b>	Ø 30 mm
<b>Gross weight</b>	49,00 kg
<b>EAN Code</b>	8012667238957



Box



Cast Iron



Wooden Box