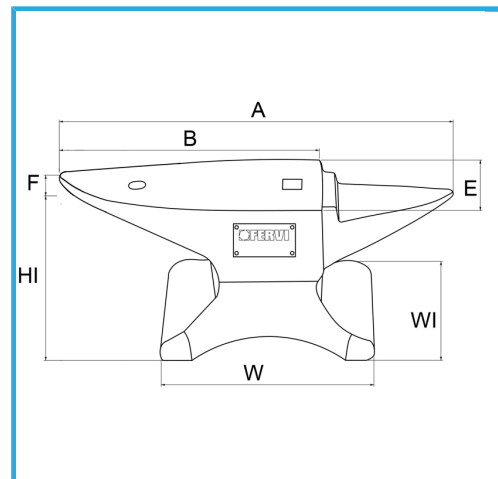
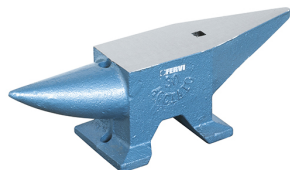


STABILE KONSTRUKTION, RUNDLOCH UND VIERKANTLOCH ZUM
STANZEN UND BIEGEN.



A	535 mm
B	360 mm
E	110 mm
W	215 mm
WI	150 mm
HI	160 mm
Toleranz	±5%
Nettogewicht	30 kg
Verpackungsmaße	570x190x210 h mm
Bruttogewicht	31,00 kg
EAN-Code	8012667202422



Box

C50